

Masjid Darru Assalam

School Expansion gets underway with groundbreaking ceremony

Contributed by the Board of Communication

Islamic Society of Wichita
6655 E. 34th St. N.
Wichita, KS 67226
(316) 682-5479

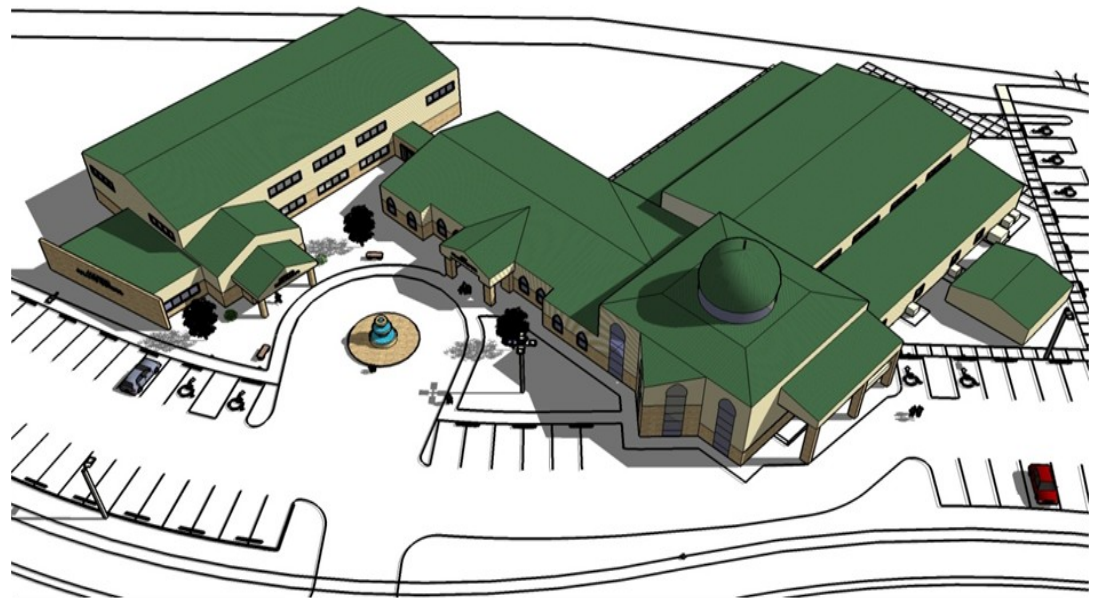
Islam in the Media

Thank you, *Eagle*, for publishing Leonard Pitts' "Muslims have died to defend U.S." (Dec. 14 Opinion). The column talked about Muslim Americans who have honorably served in the U.S. Army and died for our country. Unfortunately, as Pitts said, they are "unremembered and unremarked."

We live in a time when the majority of our media reports only on the minuscule minority of Muslims who have been involved in horrific acts of terrorism. Overlooked are the mainstream Muslim Americans who daily contribute to the fabric of America.

The Islamic Society of Wichita would like to thank and commend *The Eagle* for its courage in and commitment to publishing varied opinions that represent the diverse Wichita community.

**Written by Ayesha Zaheer-Chaudry, Board of Communication Director, and published in the Wichita Eagle on January 10, 2010*



On January 29, 2010, the Islamic Society of Wichita will have its groundbreaking ceremony for the Annoor Islamic School Expansion. This ground breaking is for the third structure to be built on the 8.4 acre site, originally purchased by ISW in 1996. The first structure to be built was the Muslim Community Center with its groundbreaking in 2000 and the second structure, Darru Assalam Masjid, was completed in 2005.

The AIS Expansion is a two story structure with a

total of 18,191 square feet. The building's exterior materials are designed to match that of the two existing buildings so that the entire facility has a cohesive look. The school expansion includes: 16 classrooms, 2 labs, a media center and library. The expansion will also include: a principal's office, school office and teachers' lounge. Each floor has a men's and women's restroom. Two sets of stairs connect the upper and lower floors.

The expansion is

located on the South/Eastern part of the property and required the removal of the two existing portable classrooms on site. The addition will be connected to the existing school through a hallway. The new structure is being built by the Evans Building Company and will be built in three phases: Phase 1a: Building Shell, Phase 1b: First Floor Interior and Phase 1c: Second Floor Interior. Construction cost for the entire project is \$1.3 million.

Sisters' Committee dedicates time and effort to serve Allah and the Wichita Muslim community

Contributed by Lana Madi, Sisters' Committee Director

The Islamic Society of Wichita Sisters Committee is delighted to present many events during 2010. The events continue to be educational, social and fun. We are happy to inform you that after a few years of hard work, our Sisters' Committee has become the most active committee in our community, alhadulliah. Every year, we add value to ISW programs. We always try to create events that are beneficial and relevant for each and every sister. It is with great satisfaction that we see this committee being useful in our community.

The Sisters' Committee is a group of active ladies giving their time, love and care to serve Allah and help sisters for a variety reasons. The Sisters' Committee members include: Myself Lana Madi as the chair, Vice Chair Nazneen Irani, Secretary



Quay Roberts and Treasurer Ruksana Ahmed. Asima Salim, Lilas Krishati and Eileen Farhat are also members. Chanda Jesri, Kim Sleiman, Areej Ahmed, and Zahra just joined our committee. I would like to welcome all members and let them know that I appreciate their effort and dedication.

We believe that an Islamic Sisters' Committee is a birthright for every sister and is our responsibility. Future events will include an educational safety lecture by a female police officer and an international culture festival. The culture festival will offer prizes for the best traditional costume and the most popular food. We appreciate your trust in the Sisters' Committee and promise to bring many more activities in the future.

Masjid income and expenses for December '09

Income:		Expenses:	
General Donations	\$1,886.30	Youth/Sisters/Seniors	\$2,611.39
Friday Donations	\$4,845	Janitorial Services	\$1,620.07
MCC Rental fees	\$120	Utilities	\$2,432.63
Automatic Withdrawals	\$1,921	Maintenance	\$1,130.75
Youth Committee	\$978	Landscaping	\$660
Class fees	\$240	Equipment	\$380
Membership dues	\$500	Postage/Supplies/Printing	\$44.65
Sisters Committee	\$1,055	Wages	\$4,600
Miscellaneous	\$0	Security	\$75
Total Income:	\$11,545.30	Total Expenses:	\$13,554.49

Weekly classes

Al Bayan Quranic Insitute	Weekdays
Hadeeth of the Day	After Fajr
Assafwah Tafseer by Sheikh Hilali	Sundays at noon
"Matters of the End of Time" by Hussam Madi	Sundays after Isha
"I Want to Know You"— A different brother introduces himself each week	Mondays after Isha
Tawheed (Oneness of Allah) by Shaheed Williams	Tuesdays after Isha
Hadeeth from <i>Saheeh Muslim</i>	Wednesdays after Isha
"Matters of the End of Time" by Hussam Madi	Thursdays after Isha
"Lessons from the Sirah of the Prophet (s)"	Fridays after Isha
"Thoughts of a Scholar" by Sheikh Mohamed Al-Hilali	Saturdays after Isha

Thank you for your continued support of our organization.